

\$309,900 - 6209 60 Street, Beaumont

MLS® #E4146559

\$309,900

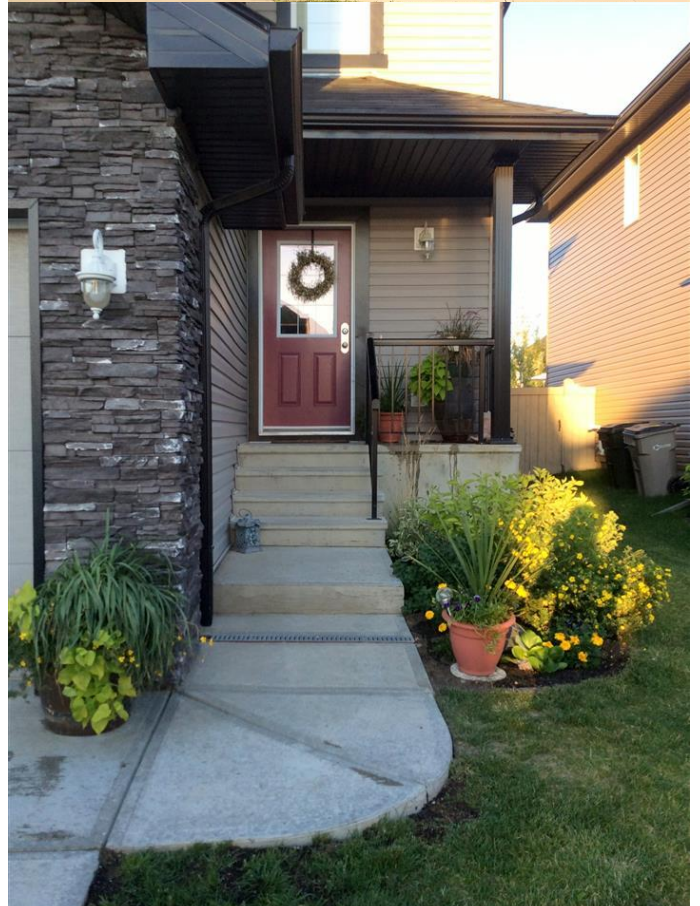
2 Bedroom, 4.00 Bathroom, 1,104 sqft
Single Family on 0 Acres

Dansereau Meadows, Beaumont, AB

The PERFECT spot for you to enjoy a fully developed 2 bedroom, 4 bathroom 1/2 DUPLEX in a quiet cul de sac backing a WALKING TRAIL in DANSEREAU MEADOWS. This lovely home features RICH HARDWOOD FLOORING, MAPLE CABINETS with GRANITE COUNTERS & black appliances. GREAT ROOM STYLE with a gas FIREPLACE and access to the sunny EAST DECK & yard off of the nook plus a 2 pc. bath and garage access. Upstairs to TWO GENEROUS MASTER SUITES, one with a full 3 piece ensuite & walk in closet plus a 4 piece bathroom & plenty of closet space. The basement development offers a large bedroom or family room with a CONTEMPORARY PINE CEILING, laminate flooring & a 3 piece bath with shower. The utility room has an ENDLESS HOT WATER TANK & a HI EFFICIENCY FURNACE plus storage space as well. The SINGLE ATTACHED GARAGE is insulated and drywalled. Lovely LOW MAINTENANCE EXTERIOR and yard with deck, BBQ gas line & storage shed. It's the perfect size for someone who wants to ENJOY THE OUTDOORS without condo fees! MOVE IN & ENJOY!

Built in 2011

Essential Information



| | |
|----------------------|---------------|
| MLS® # | E4146559 |
| Price | \$309,900 |
| Bedrooms | 2 |
| Bedrooms Above Grade | 2 |
| Bathrooms | 4.00 |
| Full Baths | 3 |
| Half Baths | 1 |
| Has Ensuite | Y |
| Square Footage | 1,104 |
| Acres | 0.07 |
| Year Built | 2011 |
| Property Type | Single Family |
| Building Type | Half Duplex |
| Style | 2 Storey |

Community Information

| | |
|-------------|-------------------|
| Address | 6209 60 Street |
| Area | Beaumont |
| Community | Dansereau Meadows |
| City | Beaumont |
| County | ALBERTA |
| Province | AB |
| Postal Code | T4X 0J3 |

Amenities

| | |
|-------------------------|---|
| Features | Deck, Laundry-In-Suite, See Remarks |
| Parking Spaces | 2 |
| Exterior Features | Backs Onto Park/Trees, Fenced, Golf Nearby, Landscaped, Low Maintenance Landscape, Playground Nearby, Public Transportation, Schools, Shopping Nearby, Cul-De-Sac |
| Parking | Single Garage Attached |
| # Garage Parking Spaces | 1 |
| Garages | 15'X12' |

Interior

| | |
|----------------|---|
| Flooring | Carpet, Hardwood, Laminate Flooring |
| Goods Included | Dishwasher-Built-In, Dryer, Garage Control, Garage Opener, Microwave Hood Cover, Refrigerator, Stove-Electric, Washer, See Remarks, Curtains and Blinds, Storage Shed |

| | |
|--------------|------------------------------------|
| Heating | Forced Air-1 |
| Has Basement | Yes |
| Basement | Full, Fully Finished |
| Fireplace | Yes |
| Fireplaces | Gas, Corner, Mantel, Tile Surround |
| # of Stories | 3 |

Exterior

| | |
|-----------------|------------------|
| Exterior | Stone, Vinyl |
| Lot Description | 8'X35.01 |
| Roof | Asphalt Shingles |
| Construction | Wood Frame |
| Foundation | Concrete |

School Information

| | |
|------------|------------------------|
| Elementary | E.Dansereau/E.Bellevue |
| Middle | JE LaPointe |
| High | Beaumont Composite HS |

Additional Information

| | |
|----------------|-------------|
| Lot Dimensions | 8'X35.01 |
| Lot Shape | Rectangular |
| Front Exposure | West |
| Front Metres | 8.000 |

Data is deemed reliable but is not guaranteed accurate by the REALTORS® Association of Edmonton.
Listing information last updated on June 26th, 2019 at 9:16am CDT