

Courtesy Of Dave Ryan Of RE/MAX Real Estate

# **\$189,900 - 3637 30 Avenue Nw, Edmonton**

MLS® #E4242032

## **\$189,900**

3 Bedroom, 1.00 Bathroom, 1,117 sqft  
Condo / Townhouse on 0.08 Acres

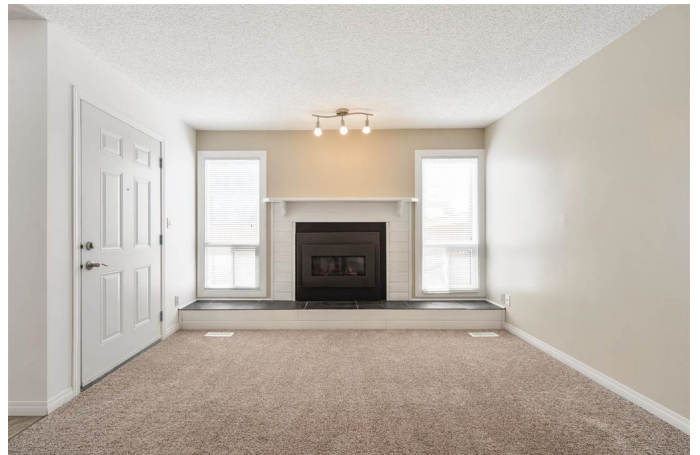
Bisset, Edmonton, AB

Updated, upgraded and outstanding!!! Feel at home as you walk in the door of this fantastic 2-storey townhouse. Large entry with room for everyone to get shoes and coats off and on. This floorplan features SOOOO much natural light! The massive living room has brand new carpet, a gas fireplace and lots of windows. The dining area is the perfect size and again, has a massive window. The kitchen features new cabinets, countertops, paint and more! Head upstairs and you'll find 2 HUGE bedrooms!!! The master is massive with room for a king size bed plus furniture plus more! And there is a big closet too. 2nd bedroom is almost just as big and is absolutely perfect. The 3rd bedroom is a great size for kids, guests or a home office space. 5pc bathroom with 2 sinks to help keep everyone happy! Basement is ready for future development if you decide you need even more space! Great yard with new fence BACKING ONTO GREEN SPACE! Close to schools, transit and so much more!!!

Built in 1982

## **Essential Information**

MLS® #	E4242032
Price	\$189,900
Bedrooms	3



Bedrooms Above Grade	3
Bathrooms	1.00
Full Baths	1
Square Footage	1,117
Acres	0.08
Year Built	1982
Type	Condo / Townhouse
Sub-Type	Townhouse
Style	2 Storey
Status	ACTIVE

### Community Information

Address	3637 30 Avenue Nw
Area	Edmonton
Community	Bisset
Condo	Kingsgate
City	Edmonton
County	ALBERTA
State	AB
Zip Code	T6L 5H5

### Amenities

Features	Laundry-In-Suite, No Animal Home, No Smoking Home, Parking-Plug-Ins
Parking	Off Street, 2 Outdoor Stalls

### Interior

Interior	Carpet, Linoleum
Interior Features	Dishwasher-Built-In, Dryer, Hood Fan, Refrigerator, Stove-Electric, Washer
Heating	Forced Air-1
Fireplace	Yes
Fireplaces	Gas, Insert
# of Stories	2
Has Basement	Yes
Basement	Full, Unfinished

### Exterior

Exterior	Vinyl
----------	-------

Exterior Features	Backs Onto Park/Trees, Fenced, Flat Site, Landscaped, Schools, Level Land
Roof	Asphalt Shingles
Construction	Wood Frame
Foundation	Concrete

### **Additional Information**

Date Listed	May 4th, 2021
-------------	---------------

Condo Fee	\$370
-----------	-------

Disclaimer: Data is deemed reliable but is not guaranteed accurate by the REALTORS® Association of Edmonton.  
Listing information last updated on July 26th, 2021 at 7:01pm CDT