

\$582,750 - 9205 96 Street Nw, Edmonton

MLS® #E4243401

\$582,750

0 Bedroom, 0.00 Bathroom,
Single Family on 0.14 Acres

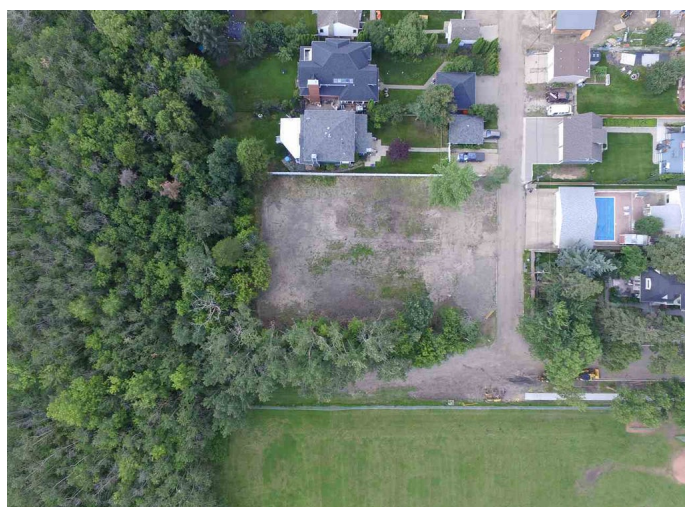
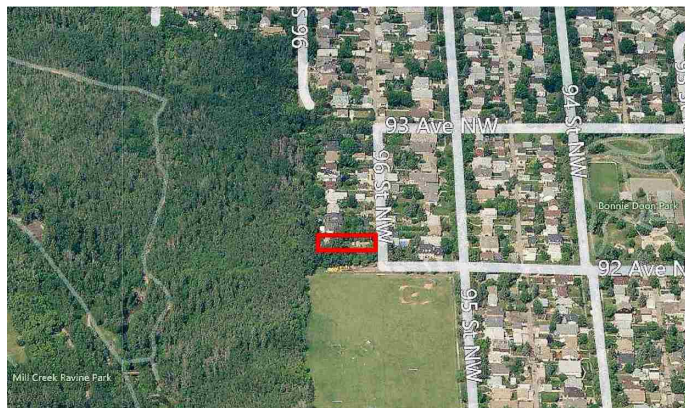
Bonnie Doon, Edmonton, AB

EXCLUSIVE & PRIVATE RAVINE LOT in the Heart of the City!Â BACKS DIRECTLY ONTO MILL CREEK RAVINE. WEST Backyard. Immediate access to Trails & the River Valley. Close commute to Downtown, Whyte Ave, University of Alberta and walking distance to Transit and Valley LRT Line.Â French Quarter nearby (La Cite Francophone, Cafe Bicyclette, Grand Market & Faculte St-Jean) plus The Columbian Coffee Bar, Duggan's Pub & Bulgogi House. Frequent WILDLIFE SIGHTINGS at your doorstep (deer, porcupines, woodchucks, owls, woodpeckers). Great Schools, Parks & Playgrounds in the Community. Build your DREAM HOME w/ potential DOWNTOWN VIEW. RF3 Zoning. * Lot Size:Â 35' W x 175' D for a total of 569 m2 (6,125 sq ft) *

Essential Information

MLS® #	E4243401
Price	\$582,750
Bathrooms	0.00
Acres	0.14
Type	Single Family
Sub-Type	Vacant Lot
Status	ACTIVE

Community Information



Address	9205 96 Street Nw
Area	Edmonton
Community	Bonnie Doon
City	Edmonton
County	ALBERTA
State	AB
Zip Code	T6C 3Y5

Exterior

Exterior Features Playground Nearby, Public Transportation, Schools, Shopping Nearby, Backs Onto Park/Trees, Flat Site, Park/Reserve, Private Setting, Ravine View, Ski Hill

School Information

Elementary	RUTHERFORD / ST. BRENDAN
Middle	KENILWORTH / ST. BRENDAN
High	MCNALLY / O'BRIEN

Additional Information

Date Listed	May 11th, 2021
Zoning	RF3

Disclaimer: Data is deemed reliable but is not guaranteed accurate by the REALTORS® Association of Edmonton.
Listing information last updated on August 1st, 2021 at 11:16pm CDT