

## **\$439,500 - 13826 120 Street Nw, Edmonton**

MLS® #E4242156

### **\$439,500**

5 Bedroom, 4.00 Bathroom, 1,804 sqft  
Single Family on 0.21 Acres

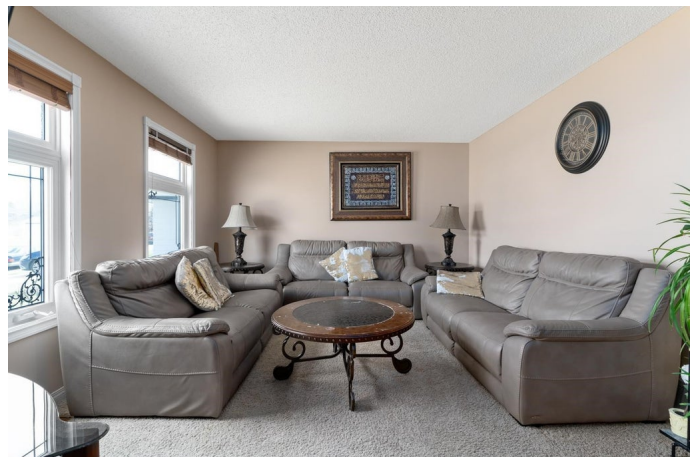
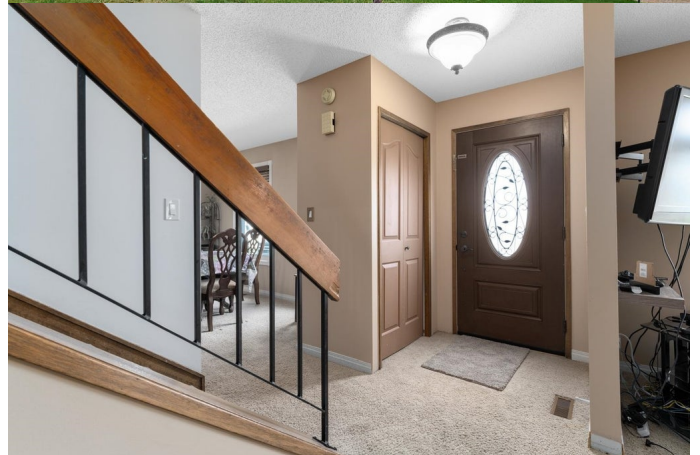
Carlisle, Edmonton, AB

This is one of the biggest city lots you will find in this area which is an astonishing 864 sq m. If you are looking to park an RV, boat, multiple vehicles, you will be able to do this with ease. This unique 2 storey is located in the family friendly neighborhood of Carlisle. This home features 1800 Sq ft above grade PLUS a fully finished basement. Main floor consists of a warm and inviting living room, a formal dining room and a large kitchen with plenty of oak cabinets. Sit and enjoy your morning coffee in your peaceful sunroom just off your family room. Head upstairs to find 3 generous sized bedrooms, including a 4 piece main bath PLUS a 4 piece ensuite just off the primary bedroom. You will find 2 additional bedrooms in the basement, dedicated laundry room complete with wash sink and additional storage. Another 4 piece bathroom downstairs. THIS YARD... it is hard to find a city lot with this much room to move. Grow a garden this summer, watch the kids run and play, hard to not enjoy this!

Built in 1980

### **Essential Information**

MLS® #	E4242156
Price	\$439,500
Bedrooms	5



Bedrooms Above Grade	3
Bathrooms	4.00
Full Baths	3
Half Baths	1
Square Footage	1,804
Acres	0.21
Year Built	1980
Type	Single Family
Sub-Type	Residential Detached Single Family
Style	2 Storey
Status	ACTIVE

### Community Information

Address	13826 120 Street Nw
Area	Edmonton
Community	Carlisle
City	Edmonton
County	ALBERTA
State	AB
Zip Code	T5X 5B8

### Amenities

Features	Patio
Parking	Double Garage Detached
# of Garages	2

### Interior

Interior	Carpet, Laminate Flooring, Ceramic Tile
Interior Features	Dishwasher-Built-In, Dryer, Refrigerator, Stove-Electric, Washer
Heating	Forced Air-1
# of Stories	3
Has Basement	Yes
Basement	Full, Fully Finished

### Exterior

Exterior	Vinyl
Exterior Features	Fenced, Landscaped, Public Transportation, Schools, Shopping Nearby, Vegetable Garden
Roof	Asphalt Shingles

Construction      Wood Frame

Foundation      Concrete

### **Additional Information**

Date Listed      May 5th, 2021

Disclaimer: Data is deemed reliable but is not guaranteed accurate by the REALTORS® Association of Edmonton.  
Listing information last updated on July 29th, 2021 at 8:31pm CDT