

Courtesy of Tracy Vipond of Exp Realty

\$369,000 - Address Unavailable, Edmonton

MLS® #E4137679

\$369,000

3 Bedroom, 3.00 Bathroom, 1,624 sqft
Single Family on 0 Acres

Chapelle Area, Edmonton, AB

Looking for a sparkling NEW home? Check out this single family home situated on a quiet street in Crimson Chappelle. Easy walking distance for the kiddos to the NEW K-9 SCHOOL. This 2 storey home has an open floor plan, neutral decor & quality finishing all at a super AFFORDABLE PRICE! The spacious foyer opens up to open concept living. Kitchen boasts upgrades galore with ample cabinetry, soft close doors and drawers, 9 ft ceilings, and sparkling quartz counter tops throughout! The Great Room & dining areas are open to the Kitchen and perfect for entertaining and easy access to the deck which is already built and included in the price.

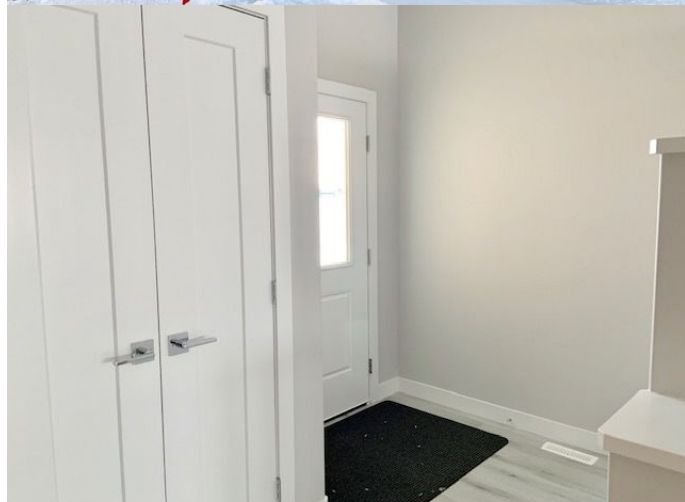
Upstairs you will find 3 bedrooms including master suite with 5 pc en suite, his and hers double sinks plus a walk in closet, BONUS ROOM, SECOND FLOOR LAUNDRY and full bath. Easy access to Windermere for all your shopping and QEII off 41 st Ave to reach the airport in about 10 minutes. Visit REALTORS WEBSITE for more details including applicable PROMOS.

Built in 2018

Essential Information

MLS® # E4137679

Price \$369,000



Bedrooms	3
Bedrooms Above Grade	3
Bathrooms	3.00
Full Baths	2
Half Baths	1
Has Ensuite	Y
Square Footage	1,624
Acres	0.07
Year Built	2018
Property Type	Single Family
Building Type	Residential Detached Single Family
Style	2 Storey

Community Information

Address	Address Unavailable
Area	Edmonton
Community	Chapelle Area
City	Edmonton
County	ALBERTA
Province	AB

Amenities

Features	Deck, No Animal Home, No Smoking Home, Vacuum System-Roughed-In, HRV System, Ceiling 9 ft., Detectors Smoke, Exterior Walls- 2x6', See Remarks
Exterior Features	Public Transportation, Shopping Nearby, See Remarks, Airport Nearby, Playground Nearby, Schools
Parking	Single Garage Attached
# Garage Parking Spaces	1
Garages	12X24

Interior

Flooring	Carpet, Ceramic Tile, Laminate Flooring
Goods Included	Garage Control, Microwave Hood Cover, Garage Opener
Heating	Forced Air-1
Has Basement	Yes
Basement	Full, Unfinished
Fireplace	Yes
Fireplaces	Electric, Wall Mount

of Stories 2

Exterior

Exterior Vinyl
Roof Asphalt Shingles
Construction Wood Frame
Foundation Concrete

Additional Information

HOA Fees Freq. Annually
Lot Shape Rectangular
Front Exposure West

Disclaimer: Information herein deemed reliable but not guaranteed by the EREB.
Listing information last updated on December 10th, 2018 at 6:31am CST