

# \$1,269,900 - # 3201 10410 102 Avenue, Edmonton

MLS® #E4168929

## \$1,269,900

3 Bedroom, 2.00 Bathroom, 2,015 sqft  
Condo / Townhouse on 0 Acres

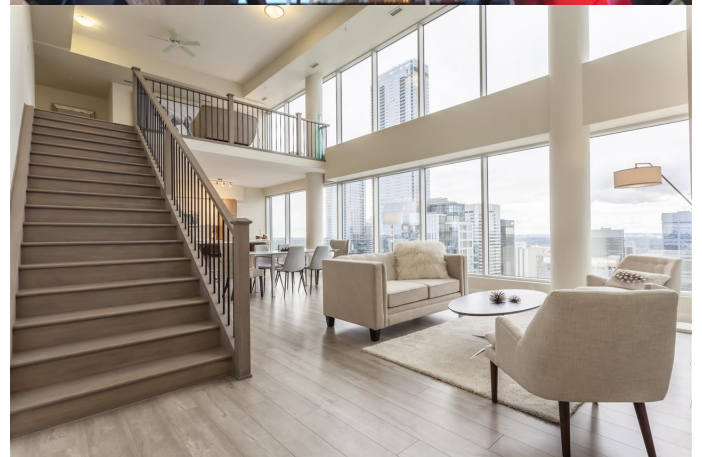
Downtown, Edmonton, AB

LIVING ON THE TOP! 32nd floor of the Fox Two Tower! Over 2,014 sq ft of contemporary space plus HUGE OUTDOOR PATIO. Amazing views from every room including Rogers Place and Ice District. Two storey ceiling featured in living room and dining room. This open concept allows for a spectacular entertaining atmosphere. Modern kitchen with huge island, plenty of cabinets, and more. Total of 3 bedrooms. Grand staircase to family room which offers upper floor views of Downtown Edmonton. Imagine watching beautiful sunrises from your outdoor patio space, walking to award winning restaurants, coffee shops, hockey games and concerts in the Rogers Arena with Ice District just around the corner. Underground heated and secured parking. 2 parking stalls included. EXECUTIVE LIFESTYLE AWAITS!

Built in 2017

## Essential Information

MLS® #	E4168929
Price	\$1,269,900
Bedrooms	3
Bedrooms Above Grade	3
Bathrooms	2.00
Full Baths	2
Has Ensuite	Y



Square Footage	2,015
Acres	0.00
Year Built	2017
Property Type	Condo / Townhouse
Building Type	Apartment High Rise
Style	Penthouse

### **Community Information**

Condo Name	Fox Two
Address	# 3201 10410 102 Avenue
Area	Edmonton
Community	Downtown
City	Edmonton
County	ALBERTA
Province	AB
Postal Code	T5J 0E9

### **Amenities**

Features	Laundry-In-Suite, Security Door, Air Conditioner, Intercom, Patio, Secured Parking
Parking Spaces	2
Exterior Features	Public Transportation, Schools, Shopping Nearby, View City, View Downtown
Parking	Heated, Tandem, Underground

### **Interior**

Flooring	Ceramic Tile, Laminate Flooring
Goods Included	Dishwasher-Built-In, Dryer, Refrigerator, Stove-Electric, Washer, Microwave Hood Cover
Heating	Forced Air-1
Basement	None, No Basement
Fireplace	Yes
Fireplaces	Electric, Wall Mount
# of Stories	2

### **Exterior**

Exterior	Brick, Acrylic Stucco
Roof	EPDM Membrane
Construction	Concrete
Foundation	Concrete

## **Additional Information**

Condo Fee               \$758

Condo Fee Includes Exterior Maintenance, Heat, Insurance for Common Areas, Landscape and Snow Removal, Water/Sewer, Janitorial Common Areas, Parking, Professional Management, Reserve Fund Contributions

Zoning                   RA9

Front Exposure        South

Data is deemed reliable but is not guaranteed accurate by the REALTORS® Association of Edmonton.

Listing information last updated on September 20th, 2019 at 6:01pm CDT