

\$499,000 - 10232 140 Street Nw, Edmonton

MLS® #E4240010

\$499,000

2 Bedroom, 2.00 Bathroom, 1,283 sqft
Single Family on 0.16 Acres

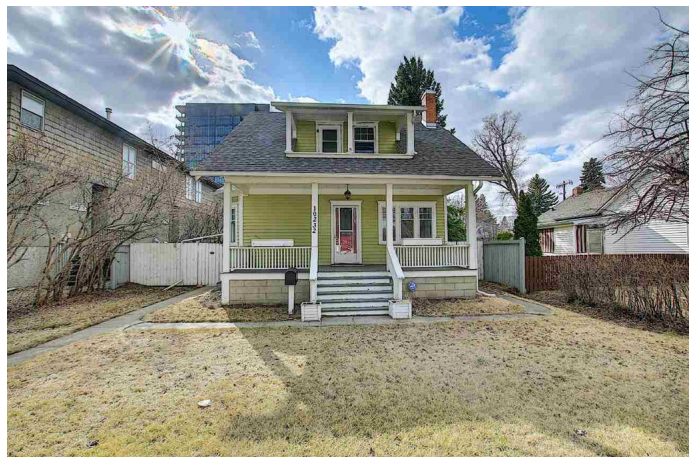
Glenora, Edmonton, AB

Welcome to the coveted community of Glenora! This home is located near the river valley, the downtown core, and the brand-new commercial plaza at West Block. Nestled on a quiet tree lined street is this fabulous west backing 50x140ft lot. This property offers rear lane access and is directly across the street from a fully landscaped park. This property is zoned RF1 and ideal for a redevelopment, or a complete renovation. This is an incredible opportunity to live in a historical community, rich in amenity, park space and character homes.

Built in 1912

Essential Information

MLS® #	E4240010
Price	\$499,000
Bedrooms	2
Bedrooms Above Grade	2
Bathrooms	2.00
Full Baths	2
Square Footage	1,283
Acres	0.16
Year Built	1912
Type	Single Family
Sub-Type	Residential Detached Single Family
Style	2 Storey



Status ACTIVE

Community Information

Address 10232 140 Street Nw
Area Edmonton
Community Glenora
City Edmonton
County ALBERTA
State AB
Zip Code T5N 2L5

Amenities

Features Ceiling 9 ft., Infill Property, Fire Pit, Porch, Parking-Extra
Parking Double Garage Detached, Parking Pad Cement or Paved
of Garages 2

Interior

Interior Ceramic Tile, Hardwood
Interior Features Appliances Negotiable
Heating Forced Air-1
Fireplace Yes
Fireplaces Wood, Brick Facing, Mantel
of Stories 2
Has Basement Yes
Basement Full, Partly Finished

Exterior

Exterior Wood
Exterior Features Back Lane, Fenced, Flat Site, Schools, Commercial, Partially
Landscaped, Subdividable Lot
Roof Asphalt Shingles
Construction Wood Frame
Foundation Brick/Stone/Block

Additional Information

Date Listed April 22nd, 2021
Zoning RF1

Disclaimer: Data is deemed reliable but is not guaranteed accurate by the REALTORS® Association of Edmonton.
Listing information last updated on July 25th, 2021 at 7:31am CDT