

\$438,900 - 8915 77 Avenue Nw, Edmonton

MLS® #E4235793

\$438,900

4 Bedroom, 2.00 Bathroom, 1,292 sqft
Single Family on 0.10 Acres

King Edward Park, Edmonton, AB

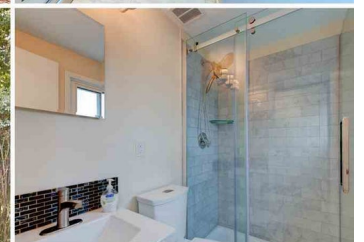
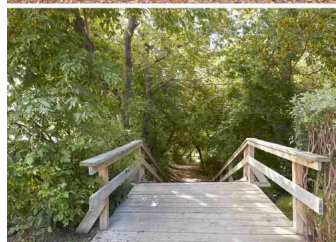
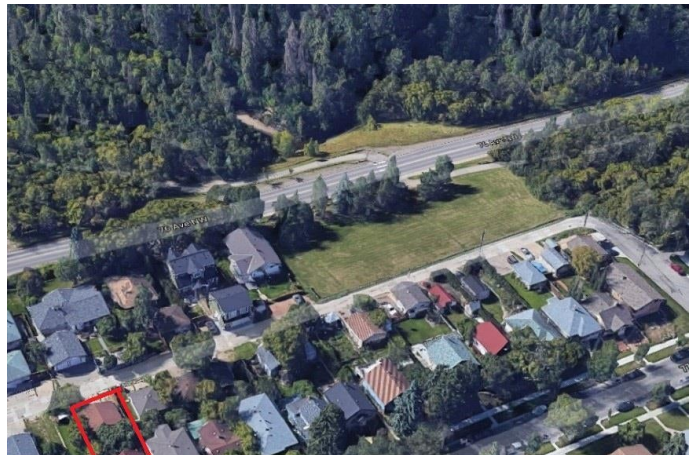
Are you a university STUDENT, or ACTIVE PROFESSIONAL!? If so, this 4-bedroom CHARACTER HOME with plenty of upgrades is in the perfect LOCATION for you - just steps from Mill Creek Ravine, restaurants on 76 avenue, an off-leash dog park, & schools! Ride your bike or hop on a quick bus to the U of A, Whyte Avenue, downtown, or to Edmonton's beautiful River Valley! Enjoy private outdoor living on your large back deck in a private yard with mature trees.

UPGRADES here include a NEW high efficiency furnace & hot water tank, NEW windows, & NEW patio door. Inside this lovely home you will enjoy a recently finished bright kitchen, large living room, renovated main floor bathroom, plenty of windows & a huge private master with ensuite! The unfinished basement makes an excellent area for a home gym or play area for kids. This home is complete with a double detached garage!

Built in 1922

Essential Information

MLS® #	E4235793
Price	\$438,900
Bedrooms	4
Bedrooms Above Grade	4
Bathrooms	2.00



Full Baths	2
Square Footage	1,292
Acres	0.10
Year Built	1922
Type	Single Family
Sub-Type	Residential Detached Single Family
Style	1 and Half Storey
Status	ACTIVE

Community Information

Address	8915 77 Avenue Nw
Area	Edmonton
Community	King Edward Park
City	Edmonton
County	ALBERTA
State	AB
Zip Code	T6C 0L8

Amenities

Features	Deck, See Remarks
Parking	Double Garage Detached
# of Garages	2

Interior

Interior	Carpet, Ceramic Tile, Hardwood
Interior Features	Dishwasher-Built-In, Dryer, Hood Fan, Refrigerator, Stove-Gas, Washer
Heating	Forced Air-1
# of Stories	2
Has Basement	Yes
Basement	Full, Unfinished

Exterior

Exterior	Stucco
Exterior Features	Fenced, Low Maintenance Landscape, Paved Lane, Playground Nearby, Public Swimming Pool, Public Transportation, Schools, Shopping Nearby, See Remarks
Roof	Asphalt Shingles
Construction	Wood Frame
Foundation	See Remarks

School Information

Elementary	Donnan School
Middle	Laurier Heights School
High	McNally School

Additional Information

Date Listed	April 1st, 2021
Zoning	RF2

Disclaimer: Data is deemed reliable but is not guaranteed accurate by the REALTORS® Association of Edmonton.
Listing information last updated on July 26th, 2021 at 7:16pm CDT