

Courtesy of Wendy Hamel of Re/Max Select

# \$178,000 - 9516 180a Street, Edmonton

MLS® #E4160915

**\$178,000**

3 Bedroom, 1.00 Bathroom, 990 sqft  
Condo / Townhouse on 0 Acres

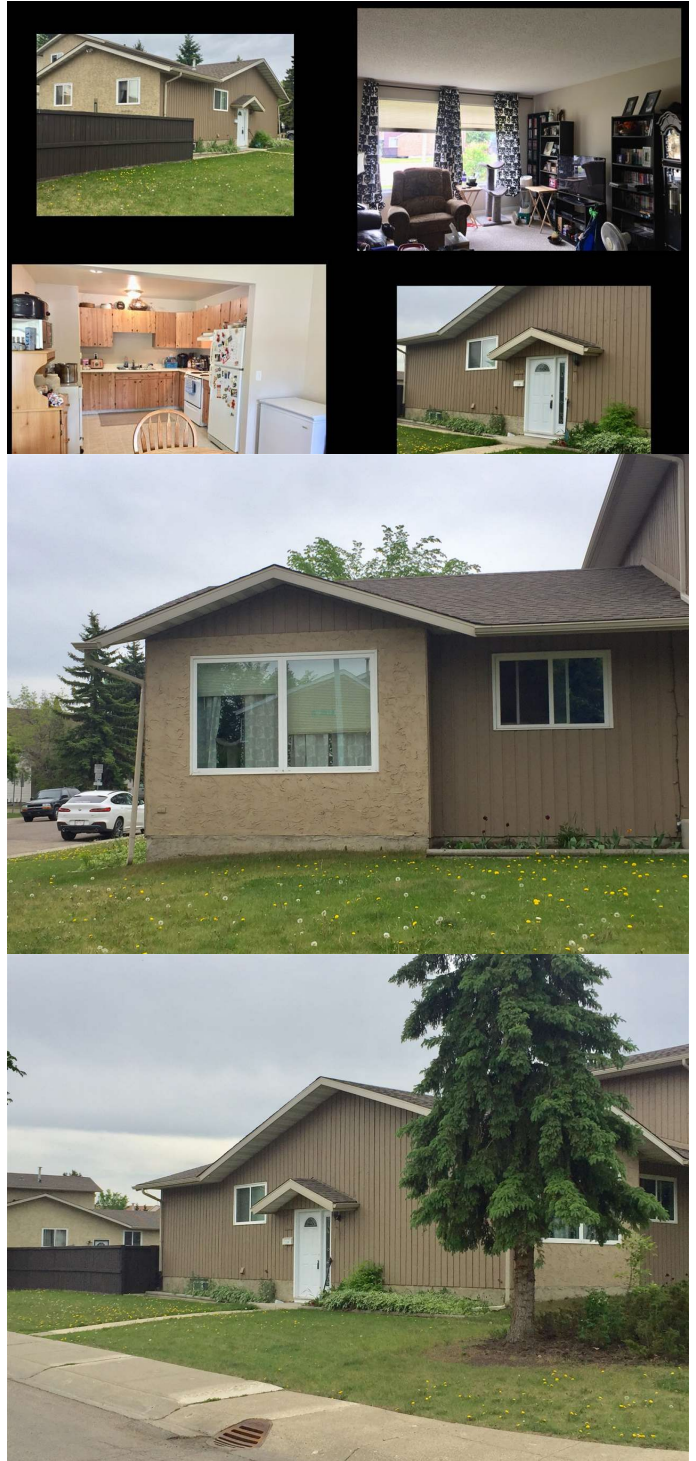
La Perle, Edmonton, AB

Affordable & well maintained BILEVEL style END unit nestled away in the subdivision of La Perle. Just under 1,000 Sq. Ft., this unit has 3 good sized bedrooms and a full bath. Functional floor plan features a large kitchen with over sized dining area and adjacent living room. Unit has had flooring upgraded within the last several years while the complex has had many big updates such as; windows, doors, shingles, and re-stained siding. Full basement is unfinished but holds a laundry area, mechanical, and plenty of storage... perfect for future development! This unit has a fully fenced and landscaped back yard plus a 2 stall parking pad at the rear. Located close to schools, transportation and major shopping (WEM).

Built in 1978

## Essential Information

MLS® #	E4160915
Price	\$178,000
Bedrooms	3
Bedrooms Above Grade	3
Bathrooms	1.00
Full Baths	1
Has Ensuite	N
Square Footage	990



Acres	0.11
Year Built	1978
Property Type	Condo / Townhouse
Building Type	Townhouse
Style	Bi-Level

### **Community Information**

Condo Name	Westaway
Address	9516 180a Street
Area	Edmonton
Community	La Perle
City	Edmonton
County	ALBERTA
Province	AB
Postal Code	T5T 2Z5

### **Amenities**

Features	Laundry-In-Suite, No Smoking Home, Vinyl Windows
Parking Spaces	2
Exterior Features	Back Lane, Fenced, Landscaped, Schools, Corner
Parking	2 Outdoor Stalls

### **Interior**

Flooring	Carpet, Linoleum
Goods Included	Dryer, Hood Fan, Refrigerator, Stove-Electric, Washer
Heating	Forced Air-1
Has Basement	Yes
Basement	Full, Unfinished
# of Stories	1

### **Exterior**

Exterior	Stucco, Wood
Roof	Asphalt Shingles
Construction	Wood Frame
Foundation	Concrete

### **Additional Information**

Condo Fee	\$320
Condo Fee Includes	Exterior Maintenance, Insurance for Common Areas, Landscape and Snow

Removal, Parking, Professional Management, Reserve Fund Contributions

Front Exposure      Northeast

Data is deemed reliable but is not guaranteed accurate by the REALTORS® Association of Edmonton.

Listing information last updated on June 26th, 2019 at 9:16am CDT