

Courtesy Of Sharon Gregresh Of Century 21 Masters

\$132,500 - # 107 6710 158 Avenue Nw, Edmonton

MLS® #E4247481

\$132,500

2 Bedroom, 2.00 Bathroom, 884 sqft
Condo / Townhouse on 0.00 Acres

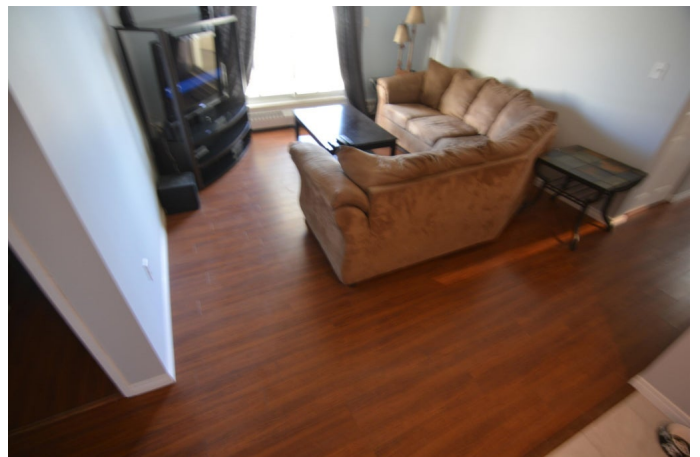
Ozerna, Edmonton, AB

Fantastic 2 Bedroom 2 Bath Condo in Edmonton's Northside. This condo has had a number of renovations that make it airy & modern. Some of the renovations include newer paint, new ceramic tile floors, new back splash & countertops in the kitchen, newer laminate flooring. The layout is fabulous with the kitchen, diningroom, and livingroom situated in the middle of the home. This means that the bedrooms are separated for privacy. The primary suite has a large bedroom, double closets and a 4 piece ensuite. The second bedroom is also huge and the main four piece bath is right beside it. Insuite laundry is another great feature of this unit. The complex is well situated in a fabulous residential neighbourhood and is a short walk to bus routes for seniors or students. The unit has large patio doors off the livingroom to a south facing patio. Do not miss this great condo, it is sure to impress you.

Built in 1991

Essential Information

MLS® #	E4247481
Price	\$132,500
Bedrooms	2
Bedrooms Above Grade	2
Bathrooms	2.00



Full Baths	2
Square Footage	884
Acres	0.00
Year Built	1991
Type	Condo / Townhouse
Sub-Type	Lowrise Apartment
Style	Single Level Apartment
Status	ACTIVE

Community Information

Address	# 107 6710 158 Avenue Nw
Area	Edmonton
Community	Ozerna
Condo	Carlisle Santa Fe
City	Edmonton
County	ALBERTA
Province	AB
Postal Code	T5Z 3A7

Amenities

Features	See Remarks
Parking	Stall

Interior

Interior	Laminate Flooring, Ceramic Tile
Interior Features	Dishwasher-Built-In, Dryer, Hood Fan, Refrigerator, Stove-Electric, Washer
Heating	Hot Water
# of Stories	1
Basement	None, No Basement

Exterior

Exterior	Stucco
Exterior Features	Public Transportation, Schools, Shopping Nearby, Low Maintenance Landscape, No Back Lane, No Through Road
Roof	Asphalt Shingles
Construction	Wood Frame
Foundation	Concrete

Additional Information

Date Listed June 1st, 2021

Condo Fee \$514

Disclaimer: Data is deemed reliable but is not guaranteed accurate by the REALTORS® Association of Edmonton.
Listing information last updated on September 23rd, 2021 at 7:01am CDT