

Courtesy Of Kelly Rissling Of RE/MAX Real Estate

\$989,800 - 9012 141 Street Nw, Edmonton

MLS® #E4232312

\$989,800

4 Bedroom, 3.00 Bathroom, 2,563 sqft
Single Family on 0.18 Acres

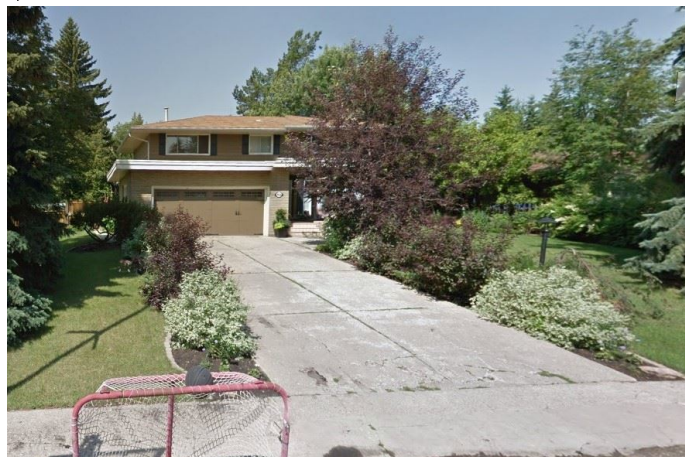
Parkview, Edmonton, AB

Welcome Home to beautiful, tranquil Parkview-Valleyview. Fabulous Family Home. 2455 Sq Ft. 4 bedrooms & m/f Den, 2 story. Fantastic crescent location, numerous upgrades throughout, gorgeous plank hardwood flooring. Family sized Island Kitchen with custom Solid Wood cabinetry and granite countertops, Formal Dining room, Grand living-room with stunning Stone gas fireplace. You will love the 4 Bedrooms on second floor, 5 piece elegant main bath and the huge Master bedroom with walk-in closet and ensuite. Fully developed basement with wood fireplace. Awesome 70 foot wide lot gives you a tremendous amount of yard space, You'll enjoy the patio, multi-level decks, fire pit area in the back yard. Lush mature perennial landscaping throughout. Oversized 14 x 7 Garden shed for all your family's extras. Located just steps away from our fantastic River Valley Park system and many of Edmonton's best dining experiences. The Valley Zoo, some of Edmonton's top rated schools, community leagues & a splash park nearby.

Built in 1959

Essential Information

MLS® #	E4232312
Price	\$989,800



Bedrooms	4
Bedrooms Above Grade	4
Bathrooms	3.00
Full Baths	3
Square Footage	2,563
Acres	0.18
Year Built	1959
Type	Single Family
Sub-Type	Residential Detached Single Family
Style	2 Storey
Status	ACTIVE

Community Information

Address	9012 141 Street Nw
Area	Edmonton
Community	Parkview
City	Edmonton
County	ALBERTA
State	AB
Zip Code	T5R 0L2

Amenities

Features	Deck, Detectors Smoke
Parking Spaces	6
Parking	Double Garage Attached
# of Garages	2

Interior

Interior	Carpet, Ceramic Tile, Hardwood
Interior Features	Alarm/Security System, Dishwasher-Built-In, Dryer, Garage Control, Garage Opener, Microwave Hood Cover, Refrigerator, Storage Shed, Stove-Gas, Window Coverings
Heating	Forced Air-2
Fireplace	Yes
Fireplaces	Gas, Wood, Insert, Masonry
# of Stories	3
Has Basement	Yes
Basement	Full, Fully Finished

Exterior

Exterior	Brick, Stucco, Vinyl
Exterior Features	Back Lane, Fenced, Fruit Trees/Shrubs, Landscaped, Public Transportation, Schools, Shopping Nearby
Lot Description	7980 Sq Ft lot
Roof	Asphalt Shingles
Construction	Wood Frame
Foundation	Concrete

School Information

Elementary	Parkview, Laurier St.Pauls
Middle	Parkview, Laurier, St.Rose
High	JP, R.Shep, St.FX, A-Mac

Additional Information

Date Listed March 8th, 2021

Disclaimer: Data is deemed reliable but is not guaranteed accurate by the REALTORS® Association of Edmonton.
Listing information last updated on July 29th, 2021 at 7:31pm CDT