

Courtesy of Bryce Willson of 2% Realty Pro

\$297,000 - # 21 8209 217 Street, Edmonton

MLS® #E4143396

\$297,000

3 Bedroom, 3.00 Bathroom, 1,357 sqft
Condo / Townhouse on 0 Acres

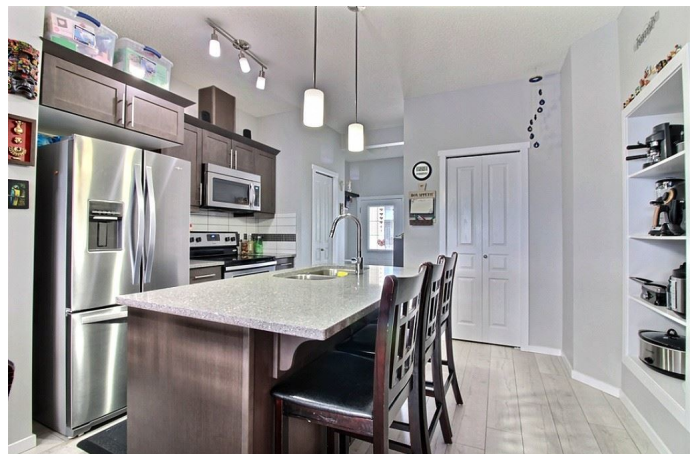
Rosenthal, Edmonton, AB

Well maintained townhouse in west Edmonton would make the perfect home for first time home buyers or a growing family. Main floor has a nice open concept layout. The kitchen has stainless steel appliances and granite counter tops. Upstairs are 3 bedrooms including a spacious master with en-suite. There is a second full bathroom upstairs along with the laundry. The basement is unfinished, which can be finished to your preferences. This unit also has a single attached garage plus a driveway for additional parking. Don't forget about the location! Only minutes to WEM, River Cree Resort & Casino, Costco and so much more. Also easy access to the Anthony Henday, Whitemud, hwy 16A and 60 and public transportation. Don't miss your opportunity to see this great home for a great price!

Built in 2015

Essential Information

MLS® #	E4143396
Price	\$297,000
Bedrooms	3
Bedrooms Above Grade	3
Bathrooms	3.00
Full Baths	2
Half Baths	1



Has Ensuite	Y
Square Footage	1,357
Acres	0.06
Year Built	2015
Property Type	Condo / Townhouse
Building Type	Townhouse
Style	2 Storey

Community Information

Condo Name	Renew In Rosenthal
Address	# 21 8209 217 Street
Area	Edmonton
Community	Rosenthal
City	Edmonton
County	ALBERTA
Province	AB
Postal Code	T5T 6Z4

Amenities

Features	Deck, See Remarks
Exterior Features	Park/Reserve, Public Transportation, Shopping Nearby, Golf Nearby
Parking	Parking Pad Cement or Paved, Single Garage Attached
# Garage Parking Spaces	1

Interior

Flooring	Carpet, Linoleum, Laminate Flooring
Goods Included	Dishwasher-Built-In, Dryer, Garage Control, Garage Opener, Microwave Hood Cover, Refrigerator, Stove-Electric, Washer, Window Coverings, Alarm/Security System, Fan-Ceiling
Heating	Forced Air-1
Has Basement	Yes
Basement	Full, Unfinished
# of Stories	2

Exterior

Exterior	Vinyl
Roof	Asphalt Shingles
Construction	Wood Frame
Foundation	Concrete

Additional Information

Condo Fee \$211

Condo Fee Includes Exterior Maintenance, Insurance for Common Areas, Landscape and Snow Removal, Professional Management

Front Exposure South

Disclaimer: Information herein deemed reliable but not guaranteed by the EREB.

Listing information last updated on February 18th, 2019 at 8:46am CST