

Courtesy Of Jessie McCracken Of YEGPro Realty

\$749,900 - 9508 100a Street Nw, Edmonton

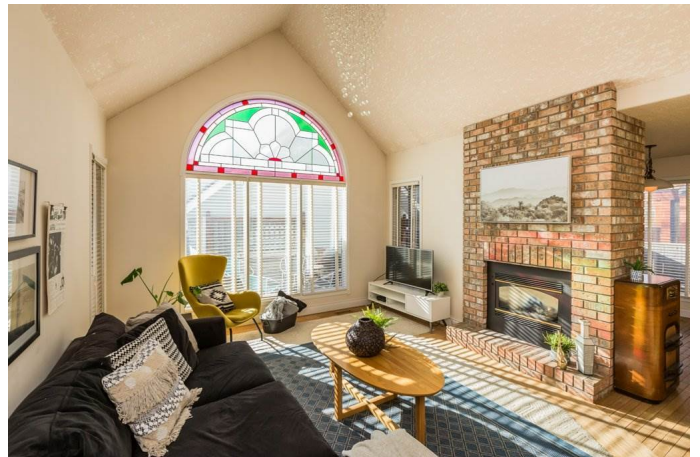
MLS® #E4238980

\$749,900

6 Bedroom, 5.00 Bathroom, 2,420 sqft
Single Family on 0.08 Acres

Rossdale, Edmonton, AB

Just blocks from the river! On a beautiful tree-lined street, this expertly crafted home is in an idyllic location to plant roots and call home. The front veranda, upper deck and custom stone work deliver a feeling of timeless comfort. Plenty of space for the family with the flexibility to have dedicated office space with 4+2 bedrooms and 4.5 bathrooms, the possibilities are endless. Prepare meals with the greatest of ease in the chef's kitchen with butler's pantry. Sit together, eat and catch up in the formal dining room and then retire to the living room with a brick-facing gas fireplace - our favorite place to warm up! Upstairs features 3 bedrooms; one with a 4-pc ensuite and the primary bedroom in the loft has a walk-in closet, 5-pc ensuite spa & den. Downstairs you will find two bedrooms, a full bath, family room, & storage. A double detached garage completes this executive home in sought after Rossdale - walking distance to Downtown & minutes from the U of A.



Built in 1992

Essential Information

MLS® #	E4238980
Price	\$749,900
Bedrooms	6

Bedrooms Above Grade	4
Bathrooms	5.00
Full Baths	4
Half Baths	1
Square Footage	2,420
Acres	0.08
Year Built	1992
Type	Single Family
Sub-Type	Residential Detached Single Family
Style	2 and Half Storey
Status	ACTIVE

Community Information

Address	9508 100a Street Nw
Area	Edmonton
Community	Rossdale
City	Edmonton
County	ALBERTA
State	AB
Zip Code	T5K 0V6

Amenities

Features	Air Conditioner, See Remarks, Porch
Parking	Double Garage Detached
# of Garages	2

Interior

Interior	Ceramic Tile, Hardwood, Carpet
Interior Features	Air Conditioning-Central, Dishwasher-Built-In, Dryer, Refrigerator, Washer, Oven-Built-In, Oven-Microwave, Stove-Countertop Electric, Vacuum System Attachments, Vacuum Systems, Window Coverings, Garage Opener, Hood Fan
Heating	Forced Air-1
Fireplace	Yes
Fireplaces	Wood, Brick Facing
# of Stories	4
Has Basement	Yes
Basement	Fully Finished, Full

Exterior

Exterior	Vinyl, Wood
Exterior Features	Schools, Shopping Nearby, Fenced, Flat Site, Paved Lane, River Valley View
Roof	Cedar Shakes
Construction	Wood Frame
Foundation	Concrete

School Information

Elementary	Garneau School K-6
Middle	Allendale School 7-9
High	Strathcona School 10-12

Additional Information

Date Listed	April 17th, 2021
Zoning	RF3

Disclaimer: Data is deemed reliable but is not guaranteed accurate by the REALTORS® Association of Edmonton.
Listing information last updated on July 26th, 2021 at 5:31pm CDT