

\$429,900 - 20827 130 Avenue, Edmonton

MLS® #E4137610

\$429,900

3 Bedroom, 3.00 Bathroom, 1,646 sqft
Single Family on 0 Acres

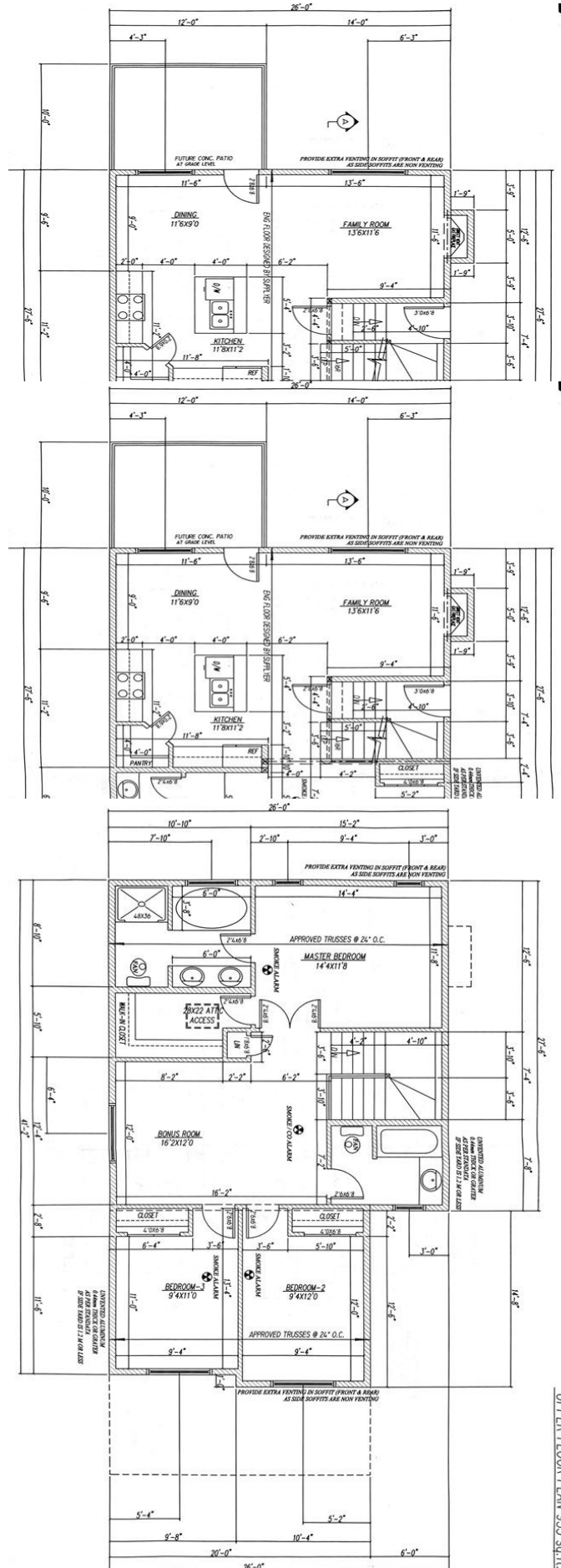
Trumpeter Area, Edmonton, AB

Welcome to LuxuryPro Homes! This Award Winning Design, comes with 3 Bedrooms with the option to select your carpet, Two and Half Bath where YOU can select the tiles. A half bath, Laundry Area, Pantry, Kitchen, Dining Area and Family Room Constitutes the Main level. This Amazing 1657 SQFT house features An Electric fireplace, Quartz countertops, High-efficiency Furnace, Smart-phone operable Thermostat, A Front Attached Garage, Separate Entry to Basement. Upstairs Is a Large Bonus Room, Three bedrooms and 2 Full Baths. Comes with a Rough-in for Vaccum and Security. You have the flexibility to select from the options or even customize the plan as per your needs. It's truly a Luxury everyone can afford!!

Built in 2018

Essential Information

MLS® #	E4137610
Price	\$429,900
Bedrooms	3
Bedrooms Above Grade	3
Bathrooms	3.00
Full Baths	2
Half Baths	1
Has Ensuite	Y



Square Footage	1,646
Acres	0.10
Year Built	2018
Property Type	Single Family
Building Type	Residential Detached Single Family
Style	2 Storey

Community Information

Address	20827 130 Avenue
Area	Edmonton
Community	Trumpeter Area
City	Edmonton
County	ALBERTA
Province	AB
Postal Code	T5S 0L4

Amenities

Features	HRV System, Vacuum System-Roughed-In, Carbon Monoxide Detectors, Programmable Thermostat
Exterior Features	Shopping Nearby, No Back Lane, Not Fenced
Parking	Double Garage Attached
# Garage Parking Spaces	2

Interior

Flooring	Carpet, Ceramic Tile, Laminate Flooring
Goods Included	Dishwasher-Built-In, Garage Control, Garage Opener, Microwave Hood Cover, Humidifier-Power (Furnace), Alarm/Security System, Appliances Negotiable
Heating	Forced Air-1
Has Basement	Yes
Basement	Full, See Remarks
# of Stories	2

Exterior

Exterior	Vinyl
Roof	Asphalt Shingles
Construction	Wood Frame
Foundation	Concrete

Additional Information

Lot Shape Rectangular

Front Exposure Southeast

Disclaimer: Information herein deemed reliable but not guaranteed by the EREB.

Listing information last updated on December 10th, 2018 at 7:01am CST