

\$888,900 - 20612 93 Avenue Nw, Edmonton

MLS® #E4175869

\$888,900

4 Bedroom, 6.00 Bathroom, 3,153 sqft
Single Family on 0 Acres

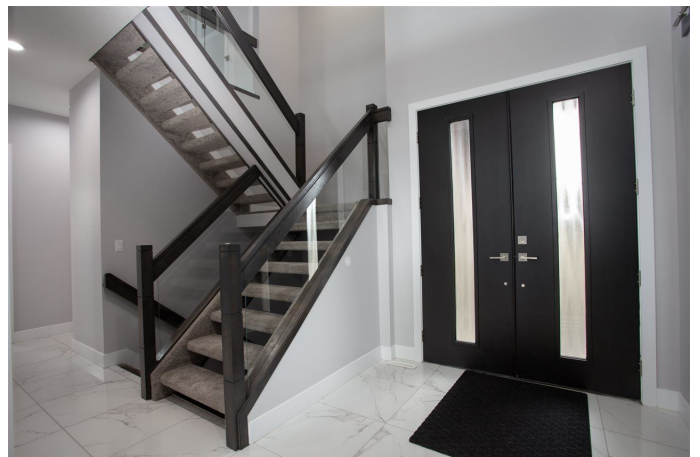
Webber Greens, Edmonton, AB

Exceptionally well thought out custom home located in Webber Greens boasts over 4000 sqft of living space. Live in style and luxury with this 4 bedroom 6 bath, den, fully finished basement & triple attached garage! Main level offers an open to above concept with custom feature walls and ceiling, grand kitchen to wow all guests and chefs spice kitchen fully equipped with gas stove and high end appliances, formal dining area with 2 way fireplace. Glass railings lead you to the second floor, over looking onto the main level which offers 3 bedrooms each with its own private washrooms, master suite with resort like en-suite and steam shower to complete the floor is a den. Entertain your guest with theatre/rec room with fireplace and wet bar. Endless amounts of upgrades, must see for yourself!

Built in 2019

Essential Information

MLS® #	E4175869
Price	\$888,900
Bedrooms	4
Bedrooms Above Grade	3
Bathrooms	6.00
Full Baths	5
Half Baths	1



Has Ensuite	Y
Square Footage	3,153
Acres	0.00
Year Built	2019
Property Type	Single Family
Building Type	Residential Detached Single Family
Style	2 Storey

Community Information

Address	20612 93 Avenue Nw
Area	Edmonton
Community	Webber Greens
City	Edmonton
County	ALBERTA
Province	AB
Postal Code	T5T 4K6

Amenities

Features	Ceiling 10 ft., Detectors Smoke, No Animal Home, No Smoking Home, Wet Bar
Exterior Features	Flat Site, Golf Nearby, Low Maintenance Landscape, Playground Nearby, Public Transportation, Shopping Nearby
Parking	Triple Garage Attached
# Garage Parking Spaces	3

Interior

Flooring	Carpet, Ceramic Tile, Vinyl Plank
Goods Included	Dryer, Washer, Window Coverings, Refrigerators-Two, Stoves-Two, Dishwasher-Two
Heating	Forced Air-1
Has Basement	Yes
Basement	Full, Fully Finished
Fireplace	Yes
Fireplaces	Gas, Double Sided
# of Stories	3

Exterior

Exterior	Stone, Acrylic Stucco
Roof	Asphalt Shingles

Construction	Wood Frame
Foundation	Concrete

School Information

Elementary	Winterburn School
Middle	Michael Phair School
High	Jasper Place

Additional Information

Lot Shape	Rectangular
Front Exposure	East

Data is deemed reliable but is not guaranteed accurate by the REALTORS® Association of Edmonton.
Listing information last updated on December 12th, 2019 at 5:16pm CST